

Watch the Smartstox interview with Jim Pettit, President & CEO
www.smartstox.com/interviews/abn



Aben Resources Ltd.

TSX VENTURE:ABN | FRANKFURT:E2L | OTC PK: ABNAF

Exploring Emerging Gold Camps in the Yukon / NWT

Aben Resources is part of the 98 Corporate Group which specializes in early-stage mineral exploration across Canada. Aben holds prospective uranium claims in northern Saskatchewan's Athabasca, but entering 2011, the company's management was looking to enter the exploration boom underway in Canada's North.

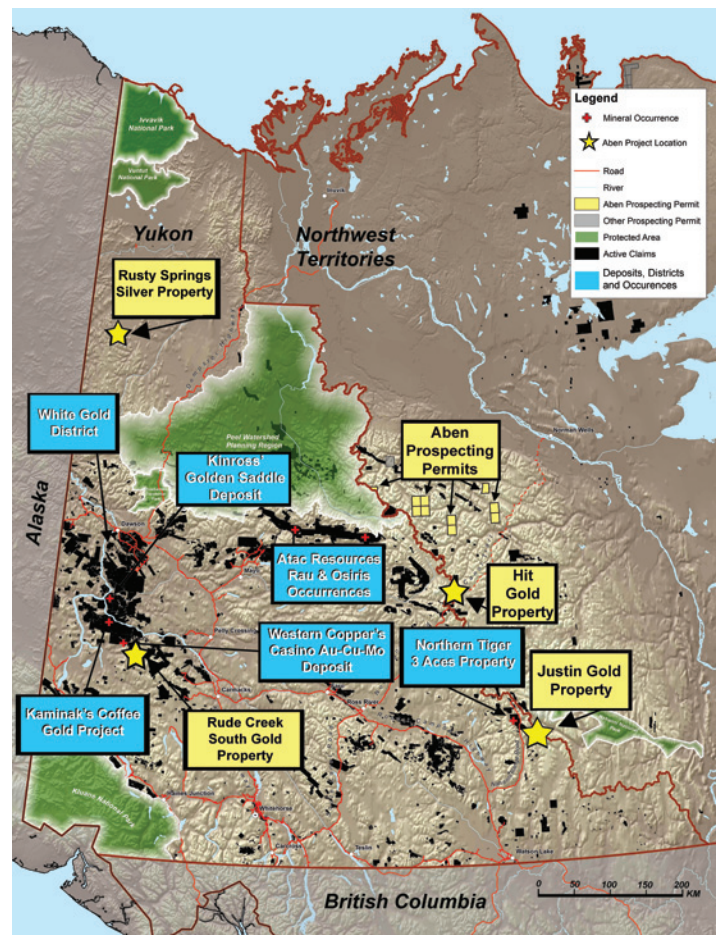
The Yukon is experiencing a modern gold rush spurred on by a handful of significant discoveries. Of particular importance has been the White Gold discovery by Underworld Resources (who were taken out by Kinross) that has stimulated a flurry of projects in the Dawson Range south of Dawson City; and the advances of ATAC Resources within the newly defined Rackla Gold Belt that runs across the east-central Yukon to the border with the NWT and has shown the potential for an extensive trend of Carlin-style, disseminated gold mineralization.

PORTFOLIO BUILDING

Aben Resources was able to quickly assemble a substantial project portfolio through the 98 Corporate Group's strong industry contacts. Notably for Aben has been Tim Termuende (PGeo.) and Ron Netolitzky (M.Sc. Geology). Mr. Termuende leads well-respected Eagle Plains Resources and has extensive exploration experience in western Canada; Mr. Netolitzky is one of the great figures in the mineral exploration industry, responsible for finding and developing a number of deposits—including Eskay Creek—and is a past PDAC 'Prospector of the Year.' The pair has joined Aben's Board of Directors with Mr. Netolitzky serving as the company Chairman.

Eagle Plains Resources has an orientation to base metal exploration, so early in 2011 it was amenable to selling three attractive precious metals prospects

in the Yukon to Aben; Aben optioned one more from another party.



Aben Resources' Project Holdings

“Aben believes the area is part of a Carlin-style trend that extends across the eastern Yukon and into the NWT. Such trends tend to host several large (>3 million ounces) deposits, surrounded by further satellite deposits.”

“The Rusty Springs Property hosts known Mississippi Valley Type silver-lead-zinc mineralization, with showings identified over a six sq. km. area. Drilling in the ‘70s reportedly intersected 1,140 g/t silver, 4.72% lead and 2.30% copper over 37.5 metres beginning at surface.”

Aben also purchased the right to outstanding NWT prospecting permit applications from Eagle Plains, as well as a geological and geochemical database that was assembled through decades of systematic mineral exploration in the Mackenzie Mountains. The data compilation is one of the most extensive of its kind, encompassing an extensive array of both public and proprietary data, including historical work by Cominco and others.

NORTHWEST TERRITORIES PERMITS

In February, the NWT government did grant the prospecting permits to Aben, giving the company exploration rights to 1,727 sq km of land in the Mackenzie Mountains directly east of the Yukon/NWT Territorial border and ATAC's exploration program of the Rackla Gold Belt. Aben has three years to conduct exploration on the Selwyn Recce prospecting permits, with the exclusive right to stake the ground during that time.

Amongst the data set acquired from Eagle Plains were thousands of sediment and soil samples which had been analyzed for indications of lead-zinc mineralization. Aben had the collection re-assayed for ten geochemical indicator elements for gold-silver mineralization, and as a result it has 18 large regional targets to explore. Additional staking was conducted to cover promising anomalies lying outside the already permitted ground.

Aben believes the area is part of a Carlin-style trend that extends across the eastern Yukon and into the NWT. Such trends tend to host several large (>3 million ounces) deposits, surrounded by further satellite deposits. The geology and stratigraphy at the Selwyn Recce permits is reportedly similar to that found at Atac's Osiris project just 50 km to the west. In June, field crews began conducting a large

scale regional reconnaissance program that includes geological mapping, regional prospecting, and geochemical and geophysical surveys.

YUKON PROJECTS

In the northwestern Yukon, the Rusty Springs Property hosts known Mississippi Valley Type silver-lead-zinc mineralization, with showings identified over a six sq. km. area. Drilling in the '70s reportedly intersected 1,140 g/t silver, 4.72% lead and 2.30% copper over 37.5 metres beginning at surface. An airstrip is already in place, facilitating the use of fixed wing aircraft. Regional mapping and sampling is already underway and an airborne magnetic survey is scheduled in advance of a drilling program planned for later in the summer.

Rude Creek South Gold Property is right in the White Gold camp just east of Western Copper's huge Casino gold-copper-moly deposit (8 million ounces gold, 4.4 billion pounds copper, and 475 million pounds molybdenum). Rude Creek is a grass roots project and sediment sampling will be undertaken this year in preparation for a drilling program next year.

The 4,114 acre Justin Gold Property lies approximately 35km southeast of the Cantung Mine, along the Yukon/NWT border. The property hosts both intrusive and sediment-hosted gold mineralization located within three main bulk-tonnage target areas. Historical grab samples from the property assayed up to 59.25 g/t gold, in addition to historical chip samples returning an average of 2.38 g/t gold over 22.5 metres. Exploration in 2010 identified a skarn on the margins of an intrusive plug; samples from the skarn returned up to 2.4 g/t gold with up to 2.9 g/t gold from mineralized quartz veins. Aben plans to drill some 2000 m at Justin this summer, as well as conduct mapping and sampling over many of the numer-

ous targets on the property that remain to be tested.

The 1,100 acre Hit Gold Property is located in east-central Yukon, also near the Yukon/NWT border. Previous exploration has identified intrusive-related gold mineralization which has returned 7.85 g/t gold over 7.0m in surface trenches.

DYNAMIC CONCLUSION

Aben commissioned TerraLogic Exploration, the exploration services subsidiary of Eagle Plains, to run their 2011 field programs. The deal is particularly advantageous for Aben given the TerraLogic team's extensive experience with the area, and because securing field crews in the north is nearly impossible given the level of activity in the region. And with Tim Termuende and Ron Netolitzky providing their geological expertise, if there is a deposit out there, Aben is well prepared to find it.

Much of this year's field work will be instrumental in setting the stage for 2012 drill programs, but the 2011 drilling will be fascinating to follow as well. With the price of silver over \$30/ounce and copper over \$4/pound, if drilling at the Rusty Springs holdings produces anything near the historical numbers, the results should provide a big upward impetus for the share price.

Shares Outstanding: 113.2 million

6 Month High: \$0.275 / Low \$0.17

FOR MORE INFORMATION



T: 604-687-3376

Toll Free: 800-567-8181

E: info@abenresources.com

www.abenresources.com

DISCLAIMER: This interview or report is for information purposes only and Dynamic Stock Market Analysis has gathered this information from sources believed to be accurate, but does not guarantee the accuracy or completeness. Any opinion or any forward-looking statement expressed herein shall not be considered a recommendation to purchase or sell the specific security. The company referred to may or may not be charged a consulting fee or a production fee. From time to time Dynamics principals may or may not take an equity position in the said company. The information disclosed has not been approved or disapproved by any security regulatory authority. All investors should seek their own investment advice. For more information: www.smartstox.com or info@smartstox.com